

## WEARDALE RAILWAY : NEWS UPDATE : No.20

19 JUNE 2009

### **No 40 RETURNS TO SERVICE: STEAM TRAINS EVERY FRIDAY, SATURDAY AND SUNDAY IN AUGUST**

- **STEAM ON 14 DAYS IN AUGUST :** With restoration work on No 40 nearing completion (see following item) Weardale Railway management have today approved running No 40 every Friday, Saturday and Sunday (14days) in August. One of the aims is to gauge the level of demand generated by a steam service to assist in planning next years timetable. Resources have also been allocated for publicity plus we will make use of our contacts with the local media to spread the news and of course word of mouth from you, our volunteers.

**EDITORIAL :** This is a new feature to enable your editor to sound off on some of the background to the news reported here. These will be very much my own views – however these editorials will be written from the standpoint of my being both a Trust Director and also one of the Trust's representatives on the board of the Railway Company. Feedback, comments, queries will be of course be welcome and will be published unless you request otherwise.

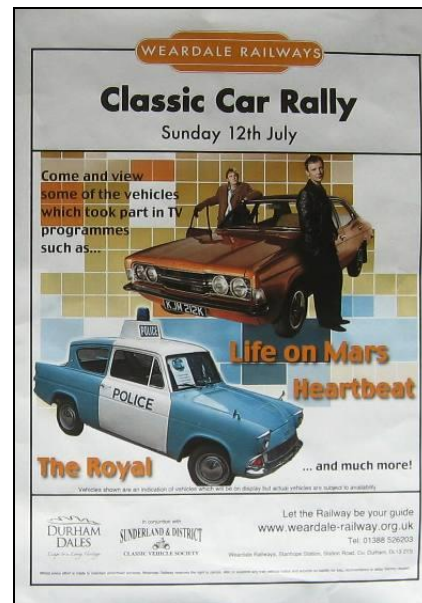
The big news in this edition is the plan to utilise No 40 for 14 days in August – this is a very positive and encouraging decision by WR management especially as it is being carried out a time when the focus both in management time and financial resources has to be on reopening the line to capture freight opportunities. This potential added income from freight being the only way to bring the Railways finances into balance in the short term – otherwise it will be a very long haul to expand operations based solely on the income from our passenger services.

If there is another theme to this edition it is the call for more volunteer effort- the next 3 months represent our peak season in terms of days of service per month. We need to increase our effort in the café and shop at both Stanhope and Wolsingham. Established Heritage Railways can make over 50% of their income from sources other than the farebox – we are running ahead of last years income figures but we need to do better. So thus is a plea for all volunteers to increase their volunteering effort in the coming months if at all possible- the reward will be the chance of getting on that train all the way to Bishop Auckland. ....and perhaps beyond..... a little earlier.

- **No 40 Progress and Plans :** Final painting of the Loco is now complete, next comes painting of the lining around the tanks and renumbering on the cab sides and buffer beams and finally the application of stencils carrying the WR crest. Some final work on the firebox is almost complete and it is planned to run a steam test, with the loco only, to Frosterley on the 26<sup>th</sup> June and with a load of coaches on the 29<sup>th</sup> June. If these test runs are satisfactory it is possible the Loco could be scheduled on the Classic Car event on the 12<sup>th</sup> July. More news later. (G Mudd )
- **War on the Line : September 18,19 & 20 : Advance notice :** To all volunteers - This is our biggest special event of the year and is the one that needs the largest number of volunteers to operate. The organisers ask that all **volunteers mark down the dates in their calendars/diaries** and note that as well as the usual train and station duties we will need extra help for the cafe, shop, Griddle car, as parking attendants and as money takers at the gates plus a host of other tasks. Additionally setting up help is needed on the Friday (18<sup>th</sup>) and setting down help on the Sunday. The formal call for volunteers will follow shortly – please try to help even if its only for half a day.( J Askwith )
- **Party and Group visits :** We are seeing a steady increase in party enquiries. After catering for a Silver Wedding Anniversary last month we have had further enquiries for birthday parties on the train. We also hosted a party of 30 for lunch at Stanhope station. ( K Wood )



Please reserve these dates in your diary- plus the Friday (18<sup>th</sup>) for setting up



The July special event day - on the 12th

- **Calling West Auckland area volunteers :** The organisers of the West Auckland Carnival have invited the Railway to set up a stall at their event on 18<sup>th</sup> July. The Carnival is from 1pm to 4pm and John Askwith is your contact if you would like to help promote the railway in your area – he can be contacted on : [john@askwith02.fsnet.co.uk](mailto:john@askwith02.fsnet.co.uk)
- **Heritage Line : Community Rail Officer post :** Finance has been secured from the Local Authorities involved in the Community Rail Partnership to support the appointment of a Community Rail Officer – recruitment should take place in July. The Weardale Railway is a member of the Heritage Line ( Bishop Auckland – Darlington branch) Partnership and we look forward to working with the appointee in developing joint initiatives as we develop our passenger services in the coming years.
- **Catering : A special thank you :** Kath Wood sends special thanks to Wendy, Dawn, Judith and Geraldine for their great efforts over the last few busy weekends in the cafe, and to Joan Carrick for serving the cream teas on Easter Sunday and for manning the picnic table on the field at the Teddy Bears Picnic event, only the second year for this, but a very successful event.
- **Catering News from Kath Wood :** I am pleased to welcome 2 new volunteers, Jean and Joan, have come forward to give assistance in the cafe. Both are from Billingham and have husband/son volunteering elsewhere on the railway. A new full-sized cooker has now been purchased this will enable a new menu to be introduced in the next 2 weeks – this will incorporate some price increases and alterations to existing menu items. We will also be promoting the fact that we use only high quality ingredients and items sourced from local producers. Bacon/meats will now be purchased from a local producer, the marginal increase in cost will be accommodated by changing the portion size and prices accordingly. It is hoped that with improved cooking facilities and more capable volunteers we will be able to further upgrade our service.
- **Yes, we need more volunteers in the café !** As we go into the summer we will need more volunteers than ever. Also, for the car rallies and War on the Line events we will be opening the cafe from 7am through to 7pm as some participants in these events will be camping from the Friday to Sunday evening. Therefore can I make another plea for more volunteers, particularly those persons who are willing and able to act as cooks during service and those who can knock together a fantastic cake or two! – contact : [kathwood\\_95@hotmail.co.uk](mailto:kathwood_95@hotmail.co.uk)

- **Wolsingham Station** : A big thank you to Terry and Ann Wraysbury from Wolsingham who have ‘adopted’ the station. Both are from Wolsingham and they have started to bring back to life the garden areas by cleaning out the weeds and planting new shrubs and bedding plants. The name board re-paint back to British Railways North Eastern Region colours is thanks to Doug Collins from Lanchester. One is erected. Two still to place. ( see photos)



The newly repainted station board at Wolsingham now in BR North eastern Region ‘ tangerine’



The newly revived and replanted station garden and verges at Wolsingham.

- **Stanhope Booking Office : Vacancy** : As the Railway becomes busier we are in need of a volunteer to help coordinate the issuing of tickets and the handling of cash both at Stanhope, Wolsingham and where applicable on the Trains. This role will also need to cover the training and rostering of volunteers. If you think you could help in the important area please contact Dave Million at : [david.million@wrjc.org.uk](mailto:david.million@wrjc.org.uk)
- **Are you being served ?** We now need to staff not only for the Stanhope shop but also the cabin at Wolsingham at weekends and busy periods More volunteers are needed to help with these duties . Kath thanks Clive and Wendy Elsdon for stepping in to open up Wolsingham for Bank Holidays and Event Days, however more help is still needed – contact her at [kathwood\\_95@hotmail.co.uk](mailto:kathwood_95@hotmail.co.uk)
- **Shop : Range of goods increased** : Kath Wood reports that we now have a new range of souvenirs for sale in the shop This new range includes a variety of quality key rings, jigsaws and CD clocks - which have proved to be one of our fastest sellers! She has also sourced from a local photographer some fridge magnets, photo cards and photo bookmark/cards showing scenes of Stanhope station and a visiting steam train on the line. Walking stick mounts, pill boxes and pin badges will hopefully be available by the end of June. Next time you are at the station why not visit the shop to see the full range. For those too distant to visit we will be happy to arrange to send orders out by post (please contact myself by email - [kathwood\\_95@hotmail.co.uk](mailto:kathwood_95@hotmail.co.uk))
- **Depot and Track work** : Since the last update work has been concentrated on maintenance work on the existing line between Stanhope and Wolsingham in preparation for the intensive summer season working timetable, plus maintenance work on the Class 73. Stocks of sleepers and track equipment are being built up in preparation for the re-sleepering of the track down to Bishop Auckland – over 3,000 sleepers will be needed to fully restore the track bed. On the debit side it is sad to report that the series of thefts of chairs screws etc from the running line at Broken Banks and Witton Park have continued – three incidents have had to be reported to the police in the last two weeks. ( G Lord)



- **Visit the Rio Grande Scenic Railway – our sister railway** ; If you can't make it in person to Colorado then try the next best thing and click on the link below for their webcam at the Alamosa depot. Visit : <http://www.riograndescenicrailroad.com/Webcam.html>



- **The North Eastern Railway Association visited the railway on the 13th June during their 'June Tour'.** They were given an extra journey when they were taken down to the Wolsingham depot – (see above) for a small donation to the No.40 fund, this made £31.00! (Thanks to Brian Cox and his guards hat). ( J Askwith – photo also)
- **Schools Competition for War on the Line** : Wendy Elsdon our Volunteer Education Liaison Officer is organising an Art Competition to commemorate the sixty five years since the Second World War D-Day Landings. It is open to children from local schools in Key Stage One and Key Stage Two, and based around “Life in the 1940's”. The initial prize is an exclusive invite for **65** children ( they are asked to dress in '40's style clothing) to attend a Celebration Tea Party that will take place on the Saturday afternoon of the event at Stanhope Station. For details contact Wendy Elsdon T: 01388 526641 or Kevin Hilary T: 07967634017 (evenings only)
- **TYNE TEES TV – No 40 Item** : A crew from Tyne Tees TV visited the depot and No 40 on the 18<sup>th</sup> June and an item will be included in their evening bulletin (6pm) probably on the 19<sup>th</sup> June
- **Witton le Wear Level crossing** : Work has started on the restoration of the former level crossing keepers cabin and on the weekend of 28<sup>th</sup>, 29<sup>th</sup> June the Junior Club members are planning to conduct a traffic survey over the crossing to establish data for our application to fully re open the crossing.
- **And now : a railway card** : This is via John Hargreaves and is dedicated to the dads amongst us. It helps if you a GWR fan. Click on the link: -

<http://www.jacquielawson.com/viewcard.asp?code=1882277545641&source=j1999>

- **Weardale Railway Branded clothing** : Dave Million has organised a further order for clothing including some new items . See below for details.

Garments bear the WR crest and will be embroidered in a suitable colour depending upon your garment colour choice. Please note that payment is required before items are ordered, please order as soon as possible. All prices include VAT. Also, if anyone would like to purchase a Weardale Railway name badge please let me know. Badges are priced at £3.50 each and are produced with full name or first name only along with job title.

**Premium Fleece Jacket £17.50 each**

Colours		Chest Sizes	
Black		XS	36"
avy		S	38"
Royal Blue		M	40"
Bottle Green		L	42/44"
Red		XL	46/48"
Maroon		XXL	48"
		XXXL	50/52"
		XXXXL	54"

**Unisex Polo Shirt £7.00 each**

Colours		Chest Sizes	
Black		XS	36"
White		S	38"
Navy		M	40"
Royal Blue		L	42/44"
Sky Blue		XL	46
Bottle Green		XXL	48"
Heather Grey		XXXL	50/52"
Yellow		XXXXL	54"
Kelly			
Red			
Maroon			
Purple			
Colours		Chest Sizes	
Black / Grey		S	36/38"
Navy / Royal		M	40"
Red / Grey		L	42/44"
Navy / Black		XL	46/48"
		XXL	50/52"

Colours		Chest Sizes	
White		XS	36"
Black		S	38"
Navy		M	40"
Royal Blue		L	42/44"
Red		XL	46
Bottle Green		XXL	48"
		XXXL	50/52"

**Defender II, 3 in 1 Jacket £40.50 each**

**Premium Rugby Shirt £17.50 each**

Orders should be forwarded to David Million along with payment. Cheques and Postal Orders should be made payable to David Million.

**David Million (Trust Director) Volunteer Liaison Officer Telephone: 01388-747683**

**Mobile: 07711-017980 Email: [david.million@wrjc.org.uk](mailto:david.million@wrjc.org.uk)**

- **And finally, we started with an Editorial so lets finish with one, its from the Northern Echo of June 8<sup>th</sup> :-**

**The Northern Echo**

Your campaigning newspaper  
**Founded 1870** No 42,861

**COMMENT**

**Chuffed to bits**

IT has been a long journey, but today, finally, there is light at the end of the tunnel for the Weardale Railway.

The American company running the heritage line is on track to start running passenger services from Stanhope to Bishop Auckland by the the autumn.

The Americans have proved to be good custodians of an important part of Britain's railway heritage.

They brought jobs to the area by setting up a UK headquarters at Stanhope station, where there is now a ten-strong workforce.

But that could be small fry if the railway succeeds in linking up with the national network.

As well as a direct connection with Locomotion: the National Railway Museum in Shildon, charter trains from anywhere in the country could start using the line again – opening up the dale to a much-needed influx of visitors.

We applaud the efforts of the British American Rail Services Company, and the scores of volunteers whose hard work and dedication has made this possible.

Without their patience and devotion, the line to Bishop Auckland would still be an overgrown eyesore.

We wish the project every success in the future.

Edited by G C Mudd : 19 June 2009

Please send your contributions, comments, questions, photos etc to : [gcmudd@ntlworld.com](mailto:gcmudd@ntlworld.com)

