

WEARDALE RAILWAY : NEWS UPDATE : No.26
28 SEPTEMBER 2009

**WORK STARTING ON WOLSINGHAM FREIGHT DEPOT
'PROJECT CONNECT' HAS REACHED BISHOP AUCKLAND
AGM TRAIN TO HARPERLEY PLANNED**

- **VOLUNTEER CHRISTMAS PARTY** : Weardale Railways CIC will host a Christmas party for volunteers, staff, their significant others and junior club members at the Stanhope Sports, Social Club. The gathering will be held on Tuesday, December 15, from 6:00pm to 10:00pm. A buffet supper will be served as well as beer and soda. A cash bar will also be available.(M Westerfield)
- **WEARDALE RAILWAY TRUST AGM – TRAIN TRIP** : Subject to operational requirements management have approved the running of a special train for Trust members, but only for those who have attended the Annual General Meeting. The AGM is being held on the 14th November. The trip will consist of an extension of the normal 13.30hrs departure from Stanhope to Harperley and maybe beyond if time permits. (G Mudd)
- **KINGS CROSS TO STANHOPE CHARTER TRAIN** : The news of the UK Railtours charter train scheduled to run on the 19th February 2010 received widespread coverage in the press and other local media. A number of our members have already booked, we understand that the train is already over half full. If you want to know more visit : - <http://www.ukrailtours.com> (G Mudd)
- **ON YOUR GUARD** : Few volunteers turn up for their first turns of duty as smartly dressed as Derek Snell who is now training as a TTI and Guard. Derek has a long and continuing connection with railways. His first job was as a cleaner at the Marley Hill shed of the Tanfield railway when it was still an NCB line – he continued to work for the NCB and now lives, appropriately enough, at Enginemans Terrace at the site of the former Wear Valley Junction Derek has previously also been carrying out track patrols between Witton Park and Witton le Wear. (G Mudd)



Derek Snell on duty with the 141 at Stanhope



Volunteers and WRJC members cleaning the coaching Stock prior to the War on the Line event (D Million)

- **'PROJECT CONNECT'** : Work continues on the track towards Bishop Auckland, the track gang has now reached a point opposite the B & Q store within a few hundred yards of our network connection. They have now removed defective sleepers from over 10 miles of railway and replaced them for just over half that distance. Additionally the track at Broken Banks has been re-profiled and re-laid and once ballasted, will be ready for traffic. A survey has been commissioned with the British Geological Survey to look at the longer term aspects of stabilisation of the embankment at Broken Banks. The track has been tested as far as Harperley, both the Class 73 and No 40 have travelled this stretch of line during September. The survey of all the river bridges is now complete – the results are to be analysed. (A Gregory)

- **WOLSINGHAM FREIGHT DEPOT** : Now that road access is restored the work to prepare the Depot site at Wolsingham for freight traffic has accelerated. Negotiations for the freight are moving forward at an encouraging pace – hopefully more detail on this may be possible shortly. Non essential stock has been moved out of the depot to enable work to start on laying new siding accommodation and adding a dynamic weighbridge to weigh the loaded wagons. (A Gregory)
- **CARRIAGE CLEANING** : Members of the Junior Club joined Ian Gardner, Clive Elsdon, Wendy Elsdon, Michael Wilkinson and David Million at Stanhope station Saturday 12th September to give the coaching stock a thorough internal and external clean. The team worked tirelessly from 10am until 7pm resulting in an immaculate rake of coaches ready for the busiest weekend of the year.
- **DURHAM DALES MOVIE ON THE NET** : The Weardale Railway features prominently in a movie produced by the area Tourist authority covering the Durham Dales> See it at :-
<http://www.youtube.com/user/wearvalleydc> or
<http://www.durhamdales.co.uk/article.php?id=8824> (M Richardson)
- **WANTED : YOUR OLD RAGS** : It would be a great help if you could sort out any rags you may have for the cleaning of No. 40. These can be cotton or artificial fabric but no wool, please. They should be sent to Steve Race as the Depot Manager at Wolsingham or taken to Stanhope Station for transport by train down to the depot - whichever is the most convenient. (D Heath)
- **WRJC VISIT NEVILLE HILL DEPOT** : A small group of Juniors attended the Neville Hill Depot open day last Sunday getting a rare chance to see behind the doors of a main line depot. Cab visits and seeing rolling stock from a number of operators was the order of the day. Neville Hill was the home of our very own 141 unit which is 25 years old this year. The visit was rounded off with a trip on the Keighley & Worth Valley Railway.(D Million)



WRJC Members; L- R Jonathan Ravenhall, Adam Heslington, Matthew Poole & Stuart Watters at the Neville Hill Depot in front of HST Power Car “The Railway Children” (D Million)



Witton le Wear Crossing Keepers cabin, externally complete and with fencing reinstated (T Hewitt)

- **WITTON LE WEAR CABIN** : Steady progress continues to be made by the volunteers at Witton le Wear Signalmens Cabin. External work on the roof , doors and widows is essentially complete and work has started on the interior cladding. The electricity supply needed for the cabin and the crossing lights has also been reinstated. (T Hewitt)
- **WAR ON THE LINE** : The weather was good, the crowds turned out and records were broken at this years event. No 40 hauled the coaching stock on 5 of the 8 runs on the special timetable for the two days. The Loco performed well but is being ‘nursed’ until some further investigative work is carried out on an axle bearing. The Class 73 covered the other runs. (G Mudd)



'Evacuees' aka the WRJC complete with suitcases and gasmasks at a wartime Stanhope station



The French Resistance assemble at a renamed station and await the arrival of the German Army (J Askwith)

- WAR ON THE LINE : TRUST CHAIRMAN THANKS VOLUNTEERS :** As you know the War on the Line event took place recently. It was a very successful event both in passenger numbers and in bringing in much needed revenue. Once again the loyal volunteers who turn out for these events did a fantastic job in keeping the whole thing going. The hours put in by those at Stanhope over the weekend were overwhelming, Friday 8am until 11pm, Saturday 7am until past midnight and Sunday again 7am until 9pm. Also there was the train crew who had an extended day due to the extra train run. Many thanks must go to all involved in the weekend, from the handful of volunteers at the stations, depot staff, train crew, junior club members, all of the re-enactors from the various groups, the Wearvalley Mercury, and most of all the many fare paying passengers and those who attended the Saturday evening dance. Next year lets try to encourage more volunteers to participate and help spread the considerable workload involved in such events, as someone might have said “never has so much work been done for so many by so few”. (K Hillary)



Some of the re-enactors on the platform at Stanhope (Photo : J Askwith)



Shops in the Rown also participated by arranging special displays (J Askwith)

- CATERING ON THE LINE :** In events like War on the Line over half the revenue can come from the commercial side of the operation, the shops, the café and the Griddle Car. Kath Wood writes : “It has been a something of a mammoth task and logistical nightmare organising the catering for so many visitors (and volunteers) but I am glad to say it was well worth it - the "blackmarket" pig went down particularly well - we had to source a second for Sunday. It looks like all records have been broken over the weekend and that's thanks to all of you willing volunteers who have made it a success. The comments from visitors has been very positive, from the beautiful cakes and pork buns to the event as a whole. It are those little things which make the effort worth it. It is fantastic we can work well as a team - we just need MORE of us!”(K Wood)

- **SALE OF ITEMS FOR THE WR JUNIOR CLUB :** A member has offered a number of railway ties and overalls which readers may find of interest . They are offered at £1 each (you can always bid more if you want to make sure of the purchase) The ties available are as follows: - **An original Scot Rail one, An original Provincial Sector tie with a "sprinter" on it, Gold and blue Woking Staff College ties, Blue and red Transmark Consultancy ties, Network South East tie, 2 Railfreight - 1 black with red and blue stripes and the other black with red stripes, A BR telecomms tie , A North London Line tie, A Permanent Way Institution Centenary tie (1879-1979)** Also on offer are a number of used used (secondhand) overalls. These are all size 44" chest jackets and 46" waist for the trousers and are in extremely good condition. **Send your bids in an envelope marked "Overalls/tie sale, WRJC" care of Stanhope Station office and include a suitable allowance for postage if you do not wish to collect them.**

- **DURHAM BOOK FESTIVAL TO VISIT RAILWAY :** The Festival takes place at several venues in late October and early November . One of the events takes place on Sunday November 1st at Stanhope station.

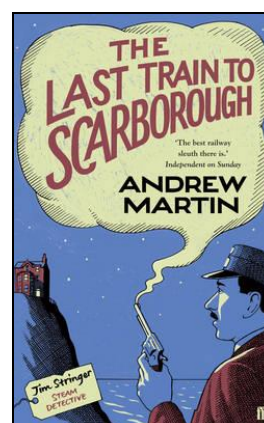
In his new novel, *The Last Train to Scarborough*, Andrew Martin's celebrated steam railway detective Jim Stringer returns to solve a new case. He finds himself in a gloomy off-season Scarborough lodging house, where the last railway man to stay there has disappeared without a trace.

Join the train at Wolsingham Station at 12.30 and travel to Stanhope to hear Andrew Martin reading on the station platform. Then catch the train back to Wolsingham and have your book signed by Andrew while in transit. *'The best railway sleuth there is'* Independent on Sunday. *Board the train at 12.30pm (event lasts approximately 90 minutes)* Tickets: £8/£6/£4 **For more information visit :**

<http://www.bookfestival.org.uk/festival-programme.html>



Andrew Martin : Author



- **HELP PLEASE :** I was recently handed a note asking me to forward Updates to the following address : hpbailey@blueyonder.com . This address bounces – does anyone know the correct form of the address? Please send to me at : gcmudd@ntlworld.com

Edited by G C Mudd : 28 September 2009