

# WEARDALE RAILWAY

**NEWSLETTER No 63 - 6 AUGUST 2012**

**ROYAL TRAIN HAULED BY TORNADO VISITS BISHOP AUCKLAND**  
**NEW STATION BEING BUILT AT WITTON LE WEAR**  
**AFTERNOON TEA TRAINS A SUCCESS**  
**AND : MALLARD ON THE WEARDALE RAILWAY**

- **ROYAL TRAIN AND TORNADO AT BISHOP AUCKLAND** : Prince Charles last travelled to Bishop Auckland in 1996 on his way to Stanhope – this year he returned as far as Bishop Auckland and on a train hauled by steam. His visit was to Bishop Auckland Castle to see the Zubaran paintings after which he departed for Alnmouth. Readers will recall that Prince Charles named newly built Tornado at a ceremony on York station at which Youth Team members were present. (See WR Newsletter no 13, February 2009). The Royal Train was hauled to Bishop Auckland by Tornado where it was watered and given some maintenance, before being hauled by 67026 in Diamond Jubilee livery back to Darlington for the run north on the ECML. David of Blackhat Railway pictures chased the train all the way to the Scottish border and you can see his photos at the link below. Two of his pictures are reproduced here. <http://www.blackhatrailwaypictures.co.uk/p749350246>



Tornado arrives at Bishop Auckland with the Royal Train on the 23<sup>rd</sup> July. On the right looking towards the Weardale Railway platform, the loco is being watered and prepared for the return to Darlington and the journey north. Both photos David, aka the Black Hat

- **A NEW STATION FOR WITTON LE WEAR** : Trains last called at Witton le Wear station in 1953, now, in an initiative involving the Weardale Railway, Witton le Wear Parish Council, the Witton Castle Country Park and Durham County Council a new station is being constructed . The railway has tested demand by utilising a temporary platform and now in this joint scheme is helping to build a permanent platform so that residents and visitors can board trains on a regular basis. If all goes well the platform could be operational in August
- **MORRIS MINOR RALLY AT STANHOPE STATION –AUGUST 19<sup>TH</sup>** : The North East Branch of the Morris Minor owners club are having thier Rally at Stanhope station on Sunday 19<sup>th</sup> August. The Rally runs from 10.30 to 16.30. All Classic cars are welcome (£3 each), public viewing is free. There will be several activities on the field.

- No. 40 : WORK COMMENCES ON BOILER AND FIREBOX :** As mentioned in the last issue the work to prepare to remove the boiler and firebox from the frames was well underway and this was completed by the third week of July. The boiler was transferred to the LMS works in Loughborough in the last week of the month for repair work. Meanwhile a new firebox is to be constructed at the works of R K Pridham in Buckfastleigh, South Devon. This firm is now part of the South Devon Railway and as they have firebox pattern in stock this will enable them to bend the steel to the correct profile and dimensions and save considerably on costs. However, because of their workload the new firebox will not be complete until mid-November, we are therefore unlikely to get the boiler returned to us until late December/early January. Thus we do not expect No.40 to be back in service until Easter 2013. ( Thanks to Trevor Hewitt and Richard Maughan for this update.) While No. 40 is away you can still see her in action in a Youtube video taken at Easter time this year by Youth Team member Alex Thorkildsen – some really fine action sequences, see it at this site: <http://www.youtube.com/watch?v=HJbe5rb42XAn>



Two photos of ‘Wilbert’ in action on its first weekend on the Weardale Railway after its transfer from the Dean Forest Railway on July 10<sup>th</sup>. It was immediately pressed into service on the War on the Line weekend of July 14<sup>th</sup> and 15<sup>th</sup>, seen on the right crossing Broadwood bridge. Both photos from David, there are several other photos on his site : <http://www.blackhatrailwaypictures.co.uk/p518203157>)

- SUNDAY AFTERNOON TEA TRAINS A SUCCESS :** Following the popularity of the Mothers Day event earlier this year, the Weardale Railway is running ‘Sunday Afternoon Tea’ trains from the 5<sup>th</sup>, through to the 26<sup>th</sup> August 2012. These were advertised on the website and as this Newsletter is prepared there are only for the remainder of August are going fast. You can book by calling 01388 526203. Prices for the full return trip with afternoon tea are £17 (Adult) and £10 (Child). Depart from Stanhope at 13.25 and from Bishop Auckland at 14.45. the service will be in the vintage first class carriage, Tea with freshly prepared sandwiches and handmade scones and cakes. will be served at the table whilst passengers relax and enjoy the journey.



The Community Bus, Service 100, is running again between Stanhope and Alston railway stations, the highest bus service in the country. Return fare £5.

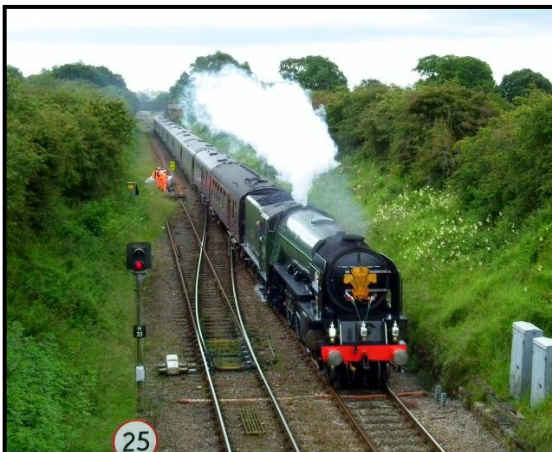
The August Sunday afternoon tea service has begun. Tea at your table in the First class coach ‘Nina’

- ROOF OF ENGLAND BUS SERVICE FROM STANHOPE STATION :** The service between Stanhope and Alston via Killhope which was introduced last summer on a trial basis, has been reintroduced again this summer. It will run as three round trips on Saturdays, Sundays and Bank Holidays until September 30<sup>th</sup>. The services depart Stanhope station at 9.30, 13.10 and 16.30hrs. Returning from Alston Railway station at 10.30, 14.10 and 17.30hrs. Journey time is 50 minutes and the bus can pick up and drop off at various points on the route. For the full timetable visit : <http://www.weardalecommunitytransport.org.uk/Root%20of%20England%20Bus.html>



Two views of the preparatory work underway to build a permanent platform at Witton le Wear. The work is being undertaken by RMS and could be ready for use in August. (Photos : Alistair Gregory)

- IOWA PACIFIC RAILROAD (HUMOROUS) VIDEO GOES VIRAL :** The IP railway in New York State, which commenced heritage services last year (it also ran the Polar Express in the same year) the Saratoga and North Creek, has appeared on Youtube and has also hit the media on both sides of the Atlantic. See the video at :- <http://www.youtube.com/watch?v=6lutNECOZfw> When last seen it had over 800,000 views and climbing. It has been picked up by the Daily Mail on this side of the Atlantic : see it at :- <http://www.dailymail.co.uk/news/article-2183240/Is-excited-trainpotter-world-Hilarious-video-shows-railfan-going-loco-special-heritage-equipment.html?ito=feeds-newsxml> .  
**WARNING : SPOILER ALERT:** If you plan to look at the video (Recommended) do it now before reading a further item later in the Newsletter.



Tornado passes Heighington with the Royal Train train bound for Bishop Auckland, 23 July  
 Both photos by Youth Team member Chris Simpson: <http://thornabykingfisher.zenfolio.com/p233135374>



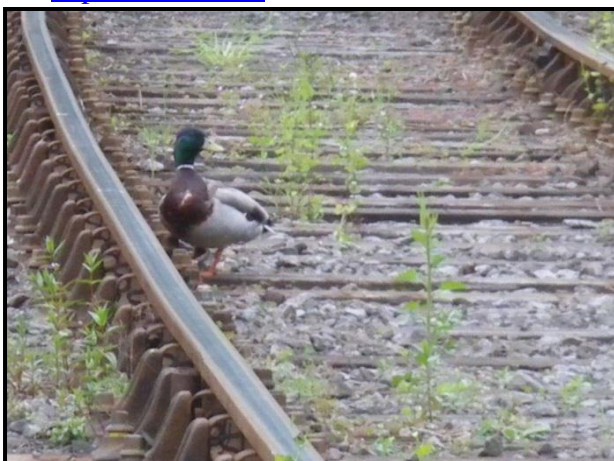
66487 passes Wear Valley Junction with the morning coal empties returning to Wolsingham, 21 July.

- VOLUNTEER BARBEQUE-: HAVE YOU REPLIED? :** Just a reminder from volunteer co-ordinator, Ruth Carroll. All active volunteers and their partners are invited to a barbeque which is going to held on Sat 11<sup>th</sup> August 2012 at 7.30 pm at Stanhope Station. . Food and drink will be provided. Please let Ruth Carroll know as soon as possible if you are able to attend or not. 07887-558151 or [RCarroll@britamrail.com](mailto:RCarroll@britamrail.com)



Crowds greeted the arrival of the Royal Train at Bishop Auckland on July 23<sup>rd</sup>. Tornado headed the train and was topped and tailed with 67026. Both photos : David Million.

- NEW DEVELOPMENTS COMING AT BISHOP TRAINS :** David Million, who as well as being a moving spirit behind the development and running of the Weardale Railway Youth Team also operates the ‘Bishop Trains’ shop on the premises of Bishop Auckland station reports the following : Bishop Trains is the process of taking over the responsibilities formerly carried out by ‘The Friends of Bishop Auckland Station’ in its stewardship of the station and its ongoing cooperation with the Bishop Line Community Rail Partnership. Additionally Bishop Trains hope it will soon be able to announce that in conjunction with Northern Trains it will be able to sell rail tickets to all points on the rail network.
- RAIL CHARTER TO VISIT STANHOPE ON AUGUST 27<sup>th</sup>:** Pathfinder Railtours are operating a train from Shrewsbury to Stanhope on Monday August 27<sup>th</sup> calling at a number of stations en route to pick up including Woverhampton, Birmingham, Derby and Chesterfield. It will be hauled by two Class 20s throughout and allows a one and a half hour break at Stanhope. It will be provided with Standard and First Class dining facilities. Full details are available on : <http://www.pathfindertours.co.uk/index.php/tour-calendar-reader/events/the-york-and-weardale-explorer.90.html>



The Mallard was observed by David Scott on June 6<sup>th</sup> this year.



3 DCR Class 56's. Hauled by 56303 are classmates 56312 and 56311 and 20 refurbished JRA wagons at Sawley, near Long Eaton, 4<sup>th</sup> August. (see news item) Photo :Ben Wheeler.

- GROUP NEWS : DEVON & CORNWALL RAILWAY :** This fellow BARS affiliate operates on the network using a fleet of Class 56 and 31 locomotives. As well as special charters DCR operates regular scrap metal trains to Cardiff from Tyneside and the Midlands and has also recently started to operate aggregate trains from quarries in the Peak District to Sheffield. Extra wagons have been acquired and refurbished (see Photo) for this service. The train shown in the photograph using three of DCR's Class 56's was a test train for 56303 after overhaul at Eastleigh and Washwood Heath

- WEARDALE RAILWAY TRUST OPERATING STANHOPE STATION SHOP :** The WR Company has agreed that the WR Trust will take over responsibility for the shop on the platform at Stanhope Station.. This took effect from August 3<sup>rd</sup> and already, under the supervision of Trust volunteer Mike Rapp is being restocked with both new and second hand items. Mike reports : We are stocking some new lines and anticipate increasing the range as time goes on and we can judge demand better. We have also received from generous members and supporters a wide range of books both railway, non railway and novels, both paper and hardback. In addition model railway items plus dvd's and tapes have been promised. I'm expecting them very soon. For this "new" venture, I'm asking for any member who might think that shop work may suit them to join the existing team, even if for only one or two days per month. The job is not physically demanding. Anyone who is outgoing and enjoys meeting people (and helping the Trust directly) is asked to contact me on my email, with a view to sitting in on a taster session. Tea and coffee supplied.



Long serving volunteer David Skuse opens the shop at Stanhope station on the first day under Trust Management . Photo : Mike Rapp.



War on the Line veteran Kevin Hillary about to reveal some wartime secrets to an astonished train crew. Photo : David Scott.

- WAR ON THE LINE WEEKEND REPORT :** Kevin Hillary, who has been an avid organiser and supporter of the War on the Line since its earliest days sends this report : Once again Weardale turned back the clock to wartime England, with re-enactors from both the NWW2A and MVT Durham and Tees setting up camp on Bondisle Playing Field behind Stanhope Station. Many members of the public also arrived in 1940's period dress to take part in the daily fashion shows, the best dressed winning family tickets on the railway. Saturday morning saw an American column of vehicles travel up the dale from Bishop Auckland to bolster the allied forces already in Stanhope. On Saturday night St. Thomas Church hall was transformed back to the period for the local dance with entertainment from Spot On and George Formby, the near capacity hall forgot all about their troubles in the kit bags to smile and enjoy themselves. With an enhanced train service to cope with all the troop movements and the odd evacuee train bringing children to safety on Weardale there was still room for large amounts people who seemed to think their journey was really necessary, to visit a dry Weardale after all the recent heavy rain. Thanks go to all who made this years WotL event such a success. There is a great amount of time given in months prior to make this work, never has so much, been done by so few. Work starts almost immediately planning for next year, with spying missions to other war time settings.
- AFTER THE STORM :** In the last Newsletter we described and included photographs of the damage caused to the railway in the storm and flashflooding on June 28<sup>th</sup>. Brian Green, WR Civil Engineer reports : Wolsingham Cutting Flood Clearance works continue. Bridge 18 (Ashes Beck) has been cleared and running freely now. There is still considerable amount of debris to remove from 7m 55c before the existing culvert can be cleared. Meanwhile at the area known as Broken Banks, just outside Bishop Auckland the British Geological Survey visited site on 11th July to review the current position, their last visit was 2010. Measurements taken at the previously install also confirmed that the original report was still valid in it's conclusions.

- **STEAM CHARTER TO VISIT ON OCTOBER 20<sup>th</sup>** : The Railway Touring Company are operating a charter which will visit Weardale on Saturday 20<sup>th</sup> October. It leaves from Carnforth and picks up at points to Leeds and finally York. It will be hauled by Britannia Class steam locomotive No. 70013 “Oliver Cromwell”. After a break at Stanhope, it returns to Darlington where it will reverse and travel via the old ‘Blyth and Tyne’ route to Morpeth before returning via the main line to York and Carnforth. Times at Stanhope are given as : arr 12,20, dep 13.45. Again the train as Standard and First Class accommodation and buffet and dining facilities, For more details go to : <http://www.railwaytouring.net/uk-day-trips/weardale-railway>



**War on the Line weekend : Wilbert arriving at Stanhope with the morning train to be met by entertainers on the platform – the ENSAtainers and a George Formby tribute artist. Both photos from Bryan Attewell – see these and others on his website : <http://bryansphotographs.blogspot.co.uk/>**

- **THAT YOUTUBE VIDEO** : The video is not quite what it seems. It is in fact a parody of another video posted over two years ago by a gentlemen who got a trifle overexcited over a double rainbow which he caught on camera above the Bear Mountain in Yosemite National Park. It now has over 34 million views. The S & NC Railroad video is in fact partly the work of an IP employee ( who shall remain anonymous) – please don’t tell the Daily Mail, let them believe that railway fans really do behave like that, which of course they don’t , do they?!
- **POLAR EXPRESS** : We hope to have more details in our next issue. Meanwhile for full information on days of operation,times, prices and to book please visit :- [https://weardale-railway.com/Polar\\_Express/index.html](https://weardale-railway.com/Polar_Express/index.html)

**EDITED by GERRY MUDD : Comments, suggestions, contributions welcome :**  
[gcmudd@ntlworld.com](mailto:gcmudd@ntlworld.com)